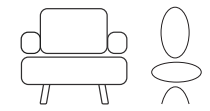


Blazer



Fairfield CUZ47



Durham CUZ14



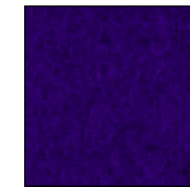
Darwin CUZ38



Giggleswick CUZ16



Cheltenham CUZ37



Kitebrook CUZ68



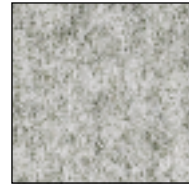
Oxford CUZ09



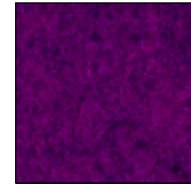
Lambrook CUZ69



Adcote CUZ48



Silverdale CUZ28



Keble CUZ29



Balliol CUZ24



Eton CUZ06



Knightsbridge CUZ26



Glenalmond CUZ62



Trevelyan CUZ31



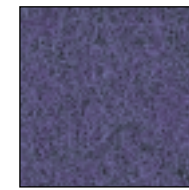
Ampleforth CUZ49



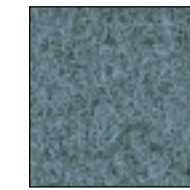
Eastbourne CUZ46



Collingwood CUZ27



Woodhouse CUZ34



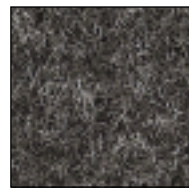
Farlington CUZ60



Bromsgrove CUZ35



Kingsmead CUZ67



Silcoates CUZ30



Banbridge CUZ32



Heriot Watt CUZ45



Abingdon CUZ40



Berkhamsted CUZ52



Aston CUZ02



Cophthorne CUZ55



Winchester CUZ12



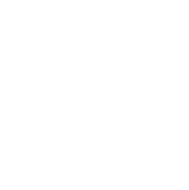
Magdalene CUZ21



Wellington CUZ13



Oriel CUZ18



Laytmer CUZ33



Wimbledon CUZ25



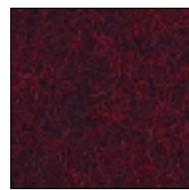
Belmont CUZ51



Charterhouse CUZ54



Prestwick CUZ20



Harmeny CUZ64



Handcross CUZ63



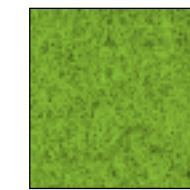
Goldsmith CUZ39



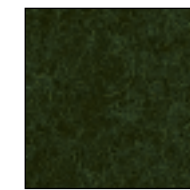
Somerville CUZ23



Bryanston CUZ53



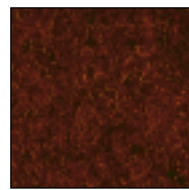
Cundall CUZ56



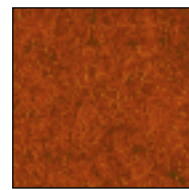
Denstone CUZ57



Napier CUZ08



Kimbolton CUZ66



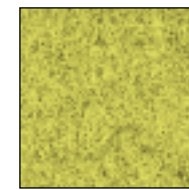
Heathersett CUZ65



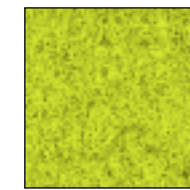
Trinity CUZ01



Ashville CUZ50



Dunhurst CUZ58



Merryhay CUZ70



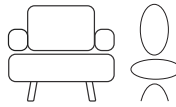
Northbourne CUZ71



Elmhurst CUZ59

Blazer

camira second nature



US

Contents	100% Pure New Wool. Non metallic dyestuffs
Second Nature	Renewable & Compostable
Weight	13 ^{1/2} oz/sq yd ±5% (20 ^{1/4} oz/running yard ±5%)
Width	54 inches ±2% Usable
Abrasion Resistance	ASTM D4157 >30,000 double rubs Wyzenbeek method Heavy Duty Upholstery BS EN ISO 12947-2:1999 50,000 Martindale cycles with a 5 year guarantee of wearability (full details available)
Flammability	California Technical Bulletin 117, Section E UFAC Class 1 BS EN 1021 - 1:2006 (cigarette) BS EN 1021 - 2:2006 (match) BS 7176:2007 Low Hazard UNI 9175 Classe 1 IM (FR PU 35 Kg/m³ foam)
Colorfastness to light	AATCC-16 (40 hours)
Colorfastness to crocking	AATCC-8 (Dry: 4 minimum, Wet: 3 minimum)
Cleaning code	S
Color Matching	Batch to batch variations in shade may occur within commercial tolerances.

Note: We reserve the right to alter technical specifications without notice.
The Unregistered Design Rights and the Copyright in all designs are the exclusive property of Camira Group Inc.

F

Composition	100% Pure Laine Vierge. Teintures non métalliques
Second Nature	Renouvelable & bio-dégradable
Poids	13 ^{1/2} oz/sq yd ±5% (20 ^{1/4} oz/lin.yard ±5%)
Largeur	54 pouces ±2% Usable
Résistance à l'abrasion	ASTM D4157 >30,000 frottements doubles Wyzenbeek Heavy Duty Upholstery BS EN ISO 12947-2:1999 50,000 Martindale tours avec une garantie de durabilité de 5 ans (renseignements complémentaires disponibles)
Flammabilité	California Technical Bulletin 117, Section E UFAC Class 1 BS EN 1021 - 1:2006 (cigarette) BS EN 1021 - 2:2006 (allumette) BS 7176 :2007 Low Hazard UNI 9175 Classe 1 IM (FR PU 35 Kg/m³) <i>Notez: Réaction au feu dépend de la mousse utilisée.</i>
Solidité à la lumière	AATCC-16 (40 heures)
Crocking	AATCC-8 (Sec: 4 minimum, Mouillé: 3 minimum)
Nettoyage	S
Standardisation des coloris	Variations de coloris d'un bain à un autre peuvent se manifester.

Veuillez noter que nous réservons le droit de modifier les spécifications techniques sans préavis.
Les droits non-déposés sur les designs ainsi que les droits de copie sont la propriété exclusive de Camira Group Inc.

camira
style with substance

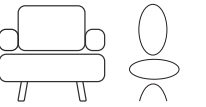
A Division of: Camira Group Inc, 2840 Fortune Circle East, Suite F, Indianapolis, IN 46241
T: 317 484 0305 **F:** 317 484 0706 **E:** contact@camirafabrics.com

Head Office: Camira Fabrics Ltd, The Watermill, Wheatley Park, Mirfield, West Yorkshire, UK, WF14 8HE
T: 00 44 (0)1924 490491 **F:** 00 44 (0)1924 495605 **E:** info@camirafabrics.com

NOV 11

Blazer

camira second nature



ES

Composición	100% Pura Lana Virgen. Tintes no metálicos
Second Nature	Renovable & Biodegradabilidad
Peso	13 ^{1/2} oz/yd² ±5% (20 ^{1/4} oz/yd ±5%)
Ancho	54 pulgadas ±2% Utilizable
Resistencia a la abrasión	ASTM D4157 >30,000 double rubs Wyzenbeek method Heavy Duty Upholstery BS EN ISO 12947-2:1999 50,000 Martindale ciclos con garantía de uso 5 años más información disponible bajo consulta)
Inflamabilidad	California Technical Bulletin 117, Section E UFAC Class 1 EN 1021 - 1:2006 (cigarrillo) EN 1021 - 2:2006 (cerilla) BS 7176 :2007 Low Hazard UNI 9175 Classe 1 IM (FR PU 35 Kg/m³) <i>Condiciones ignífugas dependientes del tipo de foam utilizado</i>
Solidez a la luz	AATCC-16 (40 horas)
Crocking	AATCC-8 (Húmedo: 4 mínimo, Seco: 4 mínimo)
Limpieza	S
Continuidad de colores	Cada lote puede tener pequeñas variaciones en el tono dentro de las tolerancias comercialmente aceptadas.

Se reserva el derecho de modificar las especificaciones técnicas sin previo aviso.
Los derechos sobre dibujos no registrados y los derechos de autor sobre todos los dibujos son propiedad exclusiva de Camira Group Inc.



www.camirafabrics.com